

BETCO®

GENESYS™

Walk-Behind Scrubber Series



YOUR TOUGHEST JOBS.
DONE.

GENESYS™

THE NEXT GENERATION OF CLEANING SYSTEMS

There is a reason why it is called GeneSys™.

This new Walk-Behind Scrubber Series — designed, developed, and assembled at our new headquarters in Bowling Green, Ohio — is the next generation of auto scrubbers. Co-developed with industry experts, each detail has been scrutinized for an unparalleled customer experience.

Power to spare allows you to perform cleaning or project work faster and with less effort. Plus, smart technologies make your operation more efficient at a lower cost.

Clean faster with less effort and cost!

You are the one who picks the V8 engine because you know that when you need the extra power, it has got to be there. That is why the GeneSys™ boasts the best performance specifications in its class. You won't be left hanging.

BEST
Performance
Specifications
in its class



GeneSys™ Mid-Size

- 33% More Horsepower*
- 36% More RPMs*
- 50% More Down Pressure**



GeneSys™ 20

- 25% More Horsepower*
- 50% More Down Pressure*

SMART, PROBLEM SOLVING TECHNOLOGIES



SoliChem™ Technology †

This is the first-ever on-board chemical dispensing system that utilizes chemical solids, resulting in:

- Up to 80% lower daily chemical costs
- Alleviation of mixing hassles and waste
- Increased sustainability with less water and packaging

SoliChem Chemicals

DAILY: pH7 Ultra
DEGREASER: Probiotic Solutions Grease Solv

SoliChem included standard on all GeneSys Mid-Size Scrubbers!



Fortify™ Asset Protection and Management Suite

Fortify™ is a suite of features and technologies that reduces the cost of ownership while extending machine life.

Make the smart decision and buy the Betco® GeneSys Scrubber to help manage your long-term operations.

- Wet Battery Protection System
- Tank Defoaming System †
- Armor™ Telemetry (Armor™ is a trademark of USA Clean)
- Programmable Timer Lock-out
- Foam De-Misting Chamber
- Scrub Deck Service Panel
- 10 / 3 / 3 Warranty

Airoflex®

Airoflex® is the Most Advanced Squeegee on the Market

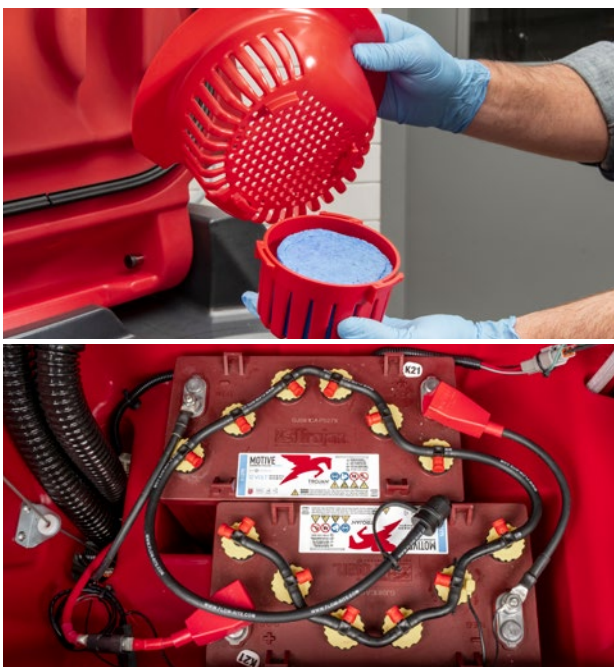
The GeneSys scrubbers are also first to include as a standard feature the most advanced squeegee on the market, Airoflex®. This specialized blade increases vacuum performance by up to 40%, leaving your floors drier and safer than the competition.

And if you have grouted tile, textured or porous floors, these blades are a must have as they maintain the vacuum force better than traditional squeegees.

Best Drying Performance!



Patented SoliChem Misting Chamber
† U.S. Patent No. 11,744,427



Airoflex® is a registered trademark of the Midwest Rubber Company
*Versus leading disk scrubber competitor
**Versus leading disk and orbital scrubber competitors

GeneSys™ Walk-Behind Scrubbers - Specifications

| | GeneSys™ 20-inch Scrubbers | | | GeneSys™ Mid-Size Scrubbers | | | | |
|---|---|---|---|---|---|---|---|---|
| SPECIFICATIONS | GeneSys™ 20D | GeneSys™ 20DT | GeneSys™ 20ORB | GeneSys™ 26D | GeneSys™ 28D | GeneSys™ 32D | GeneSys™ 28ORB | |
| Productivity (ft² / hr) | Up to 22,500 | Up to 22,500 | Up to 22,500 | Up to 29,250 | Up to 31,500 | Up to 36,000 | Up to 31,500 | |
| Scrub Deck | 20 - in Disk | 20 - in Disk | 20 - in x 14-in Orbital | 26 - in Disk | 28 - in Disk | 32 - in Disk | 28 - in x 14 - in Orbital | |
| Pad / Brush Dimensions | (1) 20 in | (1) 20 in | (1) 14 in x 20 in Rectangle | (2) 13 in | (2) 14 in | (2) 16 in | (1) 14 in x 28 in Rectangle | |
| Solution Tank | 13 - gal | 13 - gal | 13 - gal | 25 - gal | 25 - gal | 25 - gal | 25 - gal | |
| Recovery Tank | 15 - gal | 15 - gal | 15 - gal | 28 - gal | 28 - gal | 28 - gal | 28 - gal | |
| Drive System | Pad Assist | Transaxle | Transaxle | Transaxle | Transaxle | Transaxle | Transaxle | |
| Brush Motor(s) | (1) 1.0 HP | (1) 1.0 HP | (1) 0.75 HP | (2) 1.0 HP | (2) 1.0 HP | (2) 1.0 HP | (1) 0.75 HP | |
| Pad Speed | 230 RPM | 230 RPM | 2200 RPM | 300 RPM | 300 RPM | 300 RPM | 2200 RPM | |
| Down Pressures | 60 lb & 100 lb | 60, 80 & 100 lb | 60, 85 & 110 lb | 60, 120 & 180 lb | 60, 120 & 185 lb | 60, 120 & 185 lb | 60, 120 & 185 lb | |
| Battery Options | 130 AH Wet 110 AH AGM | 130 & 150 AH Wet 110 AH AGM | 130 & 150 AH Wet 110 AH AGM | 260 AH Wet 220 AH AGM | 260 AH Wet 220 AH AGM | 260 AH Wet 220 AH AGM | 260 AH Wet 220 AH AGM | |
| Run Time | Up to 3 hr | Up to 3 hr | Up to 3.5 hr | Up to 4.5 hr | Up to 4.5 hr | Up to 4.0 hr | Up to 5.5 hr | |
| Solution Flow | 0 - 0.5 gpm | 0 - 0.5 gpm | 0 - 0.5 gpm | 0 - 0.75 gpm | 0 - 0.75 gpm | 0 - 0.75 gpm | 0 - 0.75 gpm | |
| Vac Motor / Filter | 0.62 HP / HEPA | 0.62 HP / HEPA | 0.62 HP / HEPA | 0.72 HP / HEPA | 0.72 HP / HEPA | 0.72 HP / HEPA | 0.72 HP / HEPA | |
| Sound Levels | ≤65 dBa | ≤65 dBa | ≤65 dBa | ≤65 dBa | ≤65 dBa | ≤65 dBa | ≤65 dBa | |
| Machine Weight (Largest Battery) | 375 lb | 425 lb | 425 lb | 625 lb | 630 lb | 640 lb | 630 lb | |
| Machine Dimensions | 51 in x 21 in x 42 in | 51 in x 21 in x 42 in | 46 in x 21 in x 42 in | 55 in x 28 in x 44 in | 56 in x 30 in x 44 in | 59 in x 34 in x 44 in | 54 in x 29 in x 44 in | |
| Squeegee Width | 30 in | 30 in | 30 in | 35 in | 40 in | 45 in | 40 in | |
| Warranty* | 10 - Years Rotomold 3 - Years Parts/Labor 180 - Days Travel 1 - Year Pro-rated Batteries | 10 - Years Rotomold 3 - Years Parts/Labor 180 - Days Travel 1 - Year Pro-rated Batteries | 10 - Years Rotomold 3 - Years Parts/Labor 180 - Days Travel 1 - Year Pro-rated Batteries | 10 - Years Rotomold 3 - Years Parts/Labor 180 - Days Travel 1 - Year Pro-rated Batteries | 10 - Years Rotomold 3 - Years Parts/Labor 180 - Days Travel 1 - Year Pro-rated Batteries | 10 - Years Rotomold 3 - Years Parts/Labor 180 - Days Travel 1 - Year Pro-rated Batteries | 10 - Years Rotomold 3 - Years Parts/Labor 180 - Days Travel 1 - Year Pro-rated Batteries | 10 - Years Rotomold 3 - Years Parts/Labor 180 - Days Travel 1 - Year Pro-rated Batteries |

*See full warranty for details

Key Options & Accessories

Fortify™ Wet Battery Protection System

Fortify™ Programmable Timer Lock-out

Fortify™ Armor™ Telemetry & Reporting

Fortify™ Foam Control

SoliChem™ Chemicals:

Daily: pH7 Ultra

Degreaser: Probiotic Solutions Grease Solv

Brushes: General Purpose



888-GO BETCO | betco.com

©2024 Betco Corporation
All Rights Reserved.
400 Van Camp Road
Bowling Green, Ohio 43402

Item #92488-92



07/2024