

CV100T Dry Canister Vacuum

Item #85023-00

Operator's Manual Parts Schematic



Chemicals
Equipment
Programs
Process

BETCO®

CV100T

Chemicals
Equipment
Programs
Process



Dry Canister Vacuum

Betco's CV100T dry canister vacuum is designed to maximize floor to ceiling cleaning. Featuring a compact size, low noise level and optional HEPA filter this machine is perfect for cleaning occupied spaces such as healthcare and office environments. The CV100T comes standard with a tool kit and its wide no tip transport base allows the CV100T to trail the operator making cleaning easy.

Applications

- Residential/Commercial carpets and hard floors
- Office partitions/Cubicles
- Blinds/Draperies
- Vents/Ducts

Features

- Powerful 1.6 hp vacuum motor
- Low noise level
- Optional HEPA filter
- Swivel lock vacuum hose
- Standard tool kit included
- Wide "no tip" transport base



Standard Tool Kit Contents

1.25" x 8.5' Vacuum Hose, Chrome plated telescopic steel wand, 11" Floor and rug tool, 4" Crevice tool, 3" Round dusting brush, 4" Upholstery tool.

Warranty

1 year manufacturer's defect*

*Please refer to Betco Equipment Price/Product Guide for complete equipment warranty information.

Specifications

Tank size	2 - Gallon
Vacuum motor	1.6 hp/1-Stage direct
Noise level61 dB
Filtration	Triple (Bag, cartridge and exhaust)
Water lift	115"
Airflow	105 cfm
Power cord	50'
Length	15.5"
Width	13"
Height	15.5"
Weight	15 lbs.
Tool kit	Included
Productivity	2,700 sq. ft./hour

Available In

CV100T: Item #85023-00

Literature Item #85023-92

CV100T Dry Canister Vacuum

Table of Contents

Technical Information & Safety	Page	3, 4
Preparation & Operation	Page	5
After Use & Maintenance	Page	5
Part Schematic	Page	6, 7

CV100T Dry Canister Vacuum

Technical Information

Tank Size	2-Gallon
Vacuum Motor	1.6 hp (1-stage direct)
Noise Level	61 dB
Filtration	Triple (Bag, cartridge & exhaust)
Airflow	105 cfm
Water Lift	115"
Power Cord	50'
Length	15.5"
Width	13"
Height	15.5"
Weight	15 lbs
Tool Kit	Included
Productivity	2,700 sq. ft./hour

CV100T Dry Canister Vacuum

General Safety Information

When using an electrical appliance, basic precautions should always be followed, read all instructions before using.

! WARNING! To reduce risk of fire, electric shock, or injury:

- Do not leave the machine when it is plugged in. Unplug the unit from the outlet when not in use & before servicing.
- To avoid electric shock, do not expose machine to rain. Store indoors.
- Do not allow to be used as a toy. Close attention is necessary when used by or near children.
- Use only as described in this manual. Use only manufacturer's recommended attachments.
- Do not use with damaged cord or plug. If machine is not working as it should return it to a service center for inspection.
- Do not pull or carry by cord, use cord as a handle, close a door on a cord, or pull cord around sharp edges or corners. Do not run machine over cord. Keep cord away from heated surfaces.
- Do not unplug by pulling on cord. To unplug, grasp the plug, not the cord.
- Do not handle plug or machine with wet hands.
- Do not put any foreign object into openings. Do not use with any opening blocked; keep free of dust, lint, hair, & anything that may reduce airflow.
- Keep hair, loose clothing, fingers, & all parts of body away from openings & moving parts.
- Turn off all controls before unplugging.
- Do not use in or around flammable or combustible liquids such as gasoline or use in areas where they may be present.

Grounding Instructions

This machine must be grounded. If it should electrically malfunction, grounding provides a path of least resistance for electric current to reduce the risk of electric shock. This machine is equipped with a cord having an equipment-grounding conductor & grounding plug. The plug must be plugged into an appropriate outlet that is properly installed & grounded in accordance with all local codes & ordinances.

! DANGER !

Improper connection of the equipment-grounding conductor can result in a risk of electric shock. Check with a qualified electrician or service person if you are in doubt as to whether the outlet is properly grounded. Do not modify the plug provided with the machine. If plug will not fit the outlet, have a proper outlet installed by a qualified electrician.

Replace the plug if the grounding pin is damaged or broken.

Extension cords connected to this machine should be 12 gauge, 3-wire cords with 3-prong plugs & outlets. DO NOT use extension cords more than 50 feet long.

CV100T Dry Canister Vacuum

Preparation and Operation

Unwrap the power cord completely & plug into a properly grounded outlet.

Install paper filter bag.

Attach swivel hose connector and hose to tank inlet.

Attach appropriate cleaning tool.

Turn switch to on position.

You are now ready to begin your cleaning task.

After Use

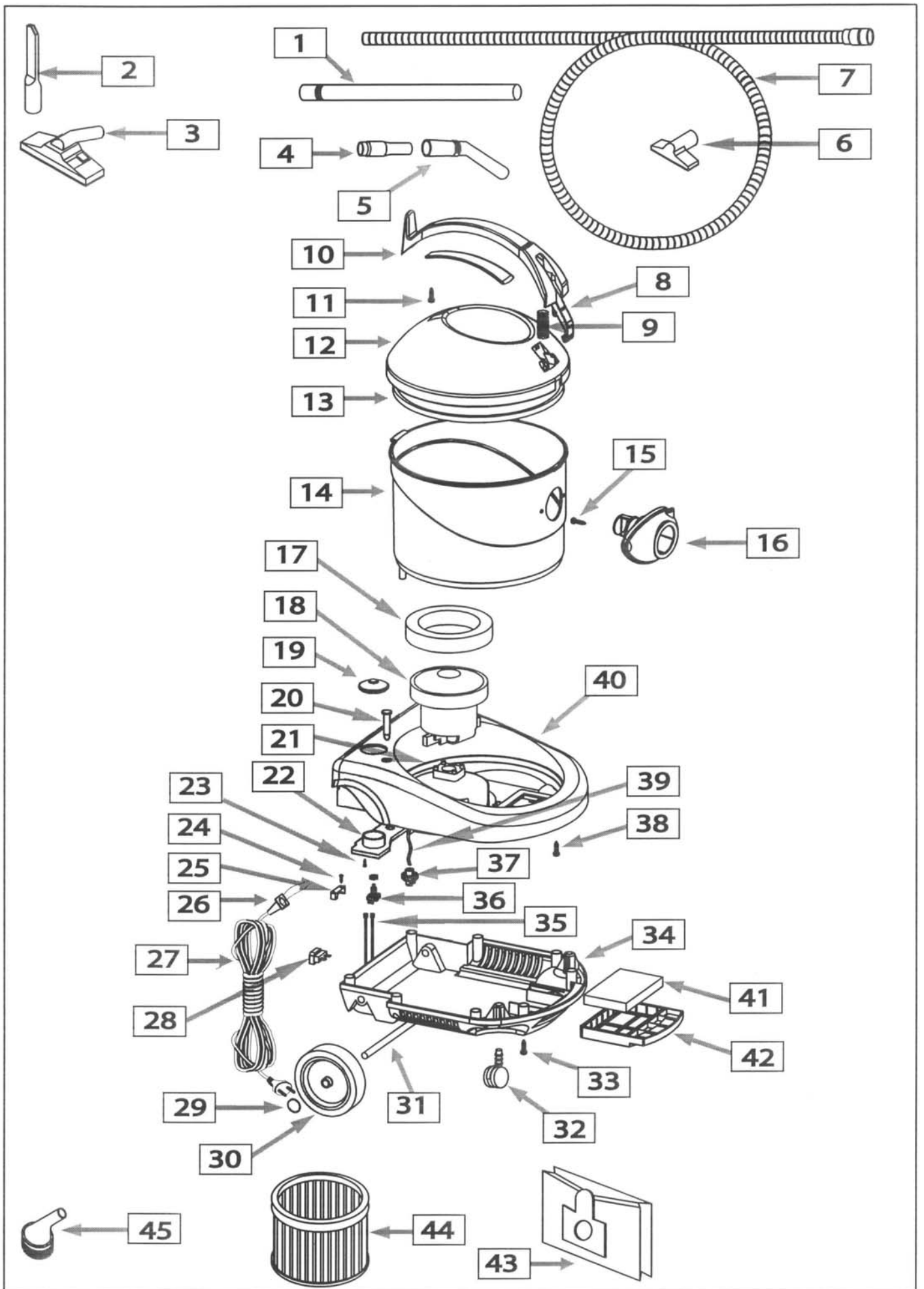
Unplug the power cord, starting from the machine wrap the power cord onto the head assembly.

Check paper filter, replace as necessary.

Wipe the entire machine with a clean, damp cloth.

Inspect the machine & all accessories for damage. Perform any required maintenance or repairs before storage.

Store the machine in a clean, dry place.



CV100T

View#	Betco SKU	Cross Ref.	Vacuum Head Parts
4	82058	36033	Intake Reducer
8	82066	98002	Button Latch Lever
9	82067	98003	Spring Latch Pin
10	82065	98001	Handle
11	82037	60002	Screw
12	83297	98004	Grey Cover
13	82068	98005	Plastic Cover Gasket
14	82069	98006	Plastic Tank
15	82037	60002	Screw
16	82085	98042	Tank Intake Hose Connector
17	82047	60037HV	Upper Motor Gasket
18	83298	60025HV 110V	Motor 115 Volt
19	82072	98010	Rubber Switch Cover
20	82074	98012	Indicator Light
21	82077	98016	Motor MountHV
22	82078	98015	Switch holder
23	82064	10025	Screw
24	82041	60010	Screw
25	82042	40506	Cable Strain Reliever
26	82086	60004	Flex Cord Stop
27	82087	600106/7	50' Power Cord
28	82080	98021	Piccolo Board
29	82083	98024	Axle Cap
30	82079	98017	Rear Transport Wheel
31	82082	98023	Axle
32	82063	35002	Front Swivel Caster
33	82037	60002	Screw
34	82070	98007	Bottom Mount Plate
35	82081	98022	Wireing
36	82073	98011	Switch
37	82075	98013	DEP. Switch T .200MM
38	82037	60002	Screw
39	82084	98027	Sponge Filter
41	83314	98020	Exhaust Filter Standard
42	82076	98014	Filter Cage
	Betco SKU	Location	Tools and Filters
1	82062	36042	Extension Wand
2	82060	36036	Crevice Tool
3	82059	36035GR	Carpet & Hard Floor Brush Tool
5	82057	36032A	Wand Handle
6	82061	36037	Upholstery Tool
7	83335	36043	Hose
43	83197	98019/10	Paper Bag pkg. 10
44	83184	98009/hepa	Hepa Cartridge Filter
44	83296	98009	Cartridge Filter
45	83336	36038	Dust Tool

BETCO US WARRANTY POLICY

10 year coverage

Subject to the conditions stated below, Betco warrants parts and labor on rotationally molded polyethylene tanks/housings and injection molded vacuum head assemblies to be free from defects in materials and workmanship for a period of ten years to the original purchaser.

3 Year Coverage

Subject to the conditions stated below, Betco warrants parts and labor on all other Betco components to be free from defects in materials and workmanship for a period of three years to the original purchaser.

1 Year Coverage

Subject to the conditions stated below, Betco offers a limited warranty on parts and labor on the following equipment: parts and accessories to be free from defects in materials and workmanship for a period of one year to the original purchaser.

- DM Series Vacuums: #85506-00, #85507-00
- Bac Pac Lite Vacuum: #85903-00
- FiberPRO® Floor Dryer: #85507-00
- WORKMAN™ Series Vacuums: #85024-00, #85025-00, #85026-00, #85027-00
- CV100T Vacuum: #85023-00
- All Tools and Accessories
- All Battery Chargers
- All Batteries are pro-rated for 1 year

Allowable Travel Time Warranty Reimbursement:

Eligible equipment: All battery and propane powered equipment products. Warranty period: 90 days from date of sale to the original purchaser. A maximum 60 mile round trip at 44 cents per mile will be allowed for warranty consideration.

Propane Machine Warranty:

Honda engines are warranted by Honda for a period of 2 years against manufacturer defects. Kawasaki engines are warranted by Kawasaki for a period of 2 years against manufacturer defects. All other components (except wear items)* are warranted by Betco for a period of 3 years.

***Wear Items exempt from Warranty consideration include but may not be limited to: power cords, transport wheels, vacuum bags, belts, squeegee blades, pad drivers, clutch plates, handle grips, filters, screens, throttle cables, brushes and carbon brushes.**

Subject to the conditions and exceptions stated in this warranty, Betco warrants the Betco products to be free from defects in material and workmanship, under normal use and service, for the periods listed under the warranty policy to the original purchaser. At any time during the warranty period, Betco will furnish replacement parts for the Betco parts to the original purchaser. Such parts will be furnished and charged including transportation costs, to the original owner through any Betco authorized Service Distributor. If the original part is returned within the warranty policy period from date of delivery for inspection by Betco and is found to be defective the owner will be credited for the cost of replacement parts plus shipping and handling. Replacement parts that have become defective through wear or abuse are not included in this warranty.

This warranty does not apply to damage or defect caused by accident, misuse, negligence, fire, or to any Betco product which has been serviced or repaired by other than an authorized Betco Service Distributor or Betco factory personnel. This warranty is void if products are used for any purpose other than that which was intended. There are no other warranties expressed or implied. In no event shall Betco be liable for incidental or consequential damages or any damage to person or property. (Please note some states do not allow the exclusion or limitations for incidental and consequential damages)

