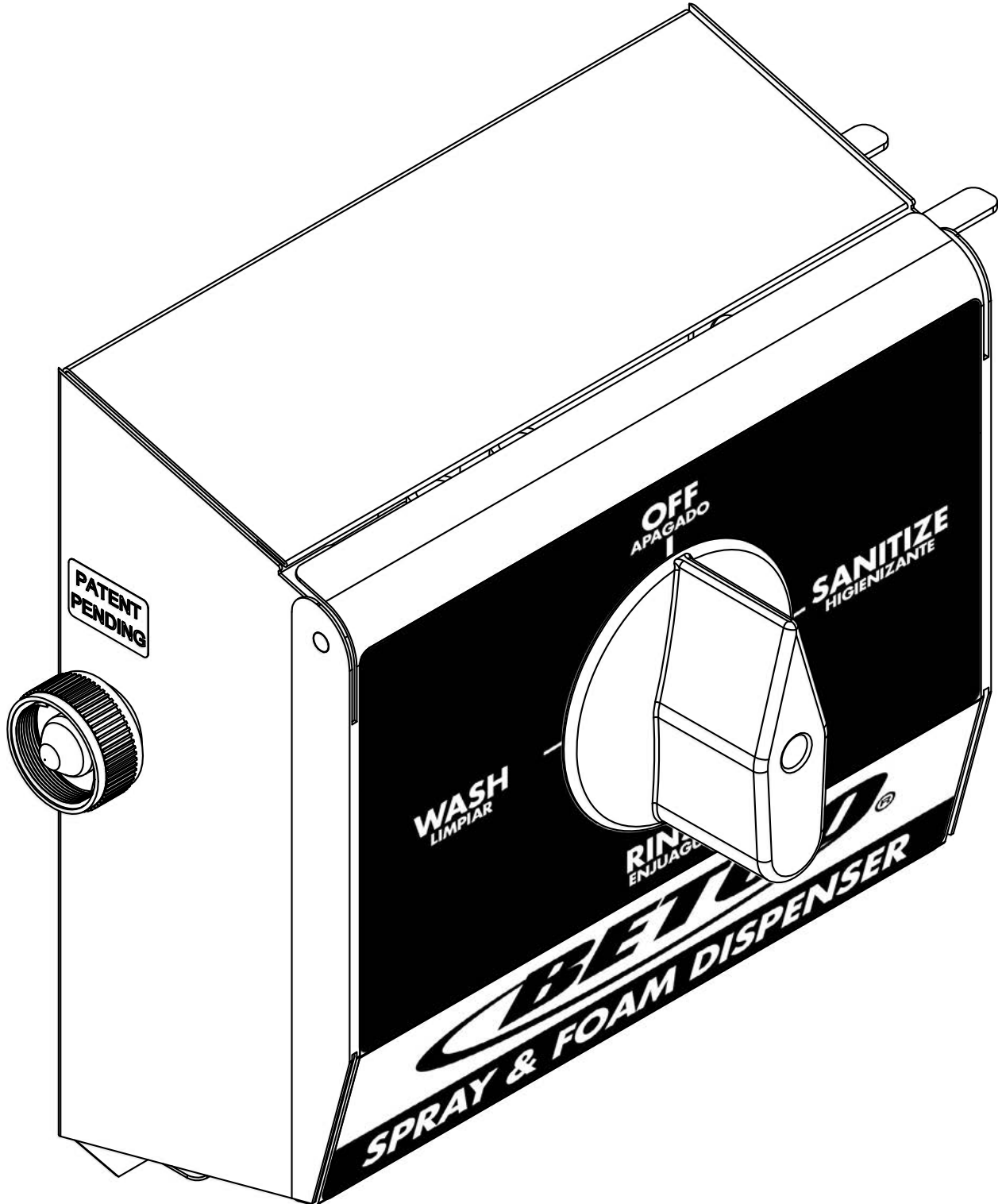




# Spray & Foam Dispenser

Item #92364-00



# Spray & Foam Dispenser

Item #92364

---

## Table of Contents

<b>Section</b>	<b>Page</b>
1. Spray & Foam Dispenser Description .....	3
2. Spray & Foam Dispenser Installation .....	4
3. Chemical Induction.....	5
4. Operation .....	5
5. Troubleshooting.....	6
6. Dimensions .....	7
7. Spray & Foam Dispenser Diagram.....	8
8. Spray & Foam Dispenser Parts Listing .....	9
9. Spray & Foam Dispenser Diagram and Listing .....	10
10. Warranty .....	11



# 1. Spray & Foam Dispenser Description

The SPRAY & FOAM DISPENSER is a spray system designed with a single knob to control OFF, RINSE and up to two chemicals using a single chemically resistant plastic injector. SPRAY & FOAM DISPENSER can be used in any application where a chemical product must be sprayed or foamed without the use of compressed air or a high pressure pump. City water pressure and spray gun and foam wand attachments create the correct amount of pressure and foam for cleaning in food service applications such as supermarket meat rooms, deli areas, and seafood departments.

The SPRAY & FOAM DISPENSER offers the following advantages over a traditional spray system:

- No manifold
- No ball valves
- Stainless steel cover with foam wand storage offers neat appearance
- Polypropylene injector for chemical resistance
- Large knob for easy turning
- 6 GPM Rinse Flow

**NOTE:** All installations must conform to local plumbing codes and use the approved backflow preventors. Remember to turn the water supply to the dispenser off when not in use.

**WARNING:** Water supply pressure must not exceed 125 psi and water temperature must not exceed 150°F (66°C). Use care when handling hazardous chemicals.

**CAUTION:** Turn off water supply before servicing and when dispenser is not in use. When servicing unit be sure that replacement parts have been installed according to drawing.



## 2. Spray & Foam Dispenser Installation

**NOTE: All installations must conform to local plumbing codes and use the approved backflow preventors.**

**WARNING: Water supply pressure must not exceed 125 psi and water temperature must not exceed 150°F (66°C). Use care when handling hazardous chemicals.**

### **MOUNTING AND WATER SUPPLY:**

Mount in a convenient location using the screw and anchor kit provided.

The water inlet is equipped with a female garden hose fitting. The fitting may be removed to permit direct connection to 1/4" NPT pipe.

**WARNING: Water supply pressure must not exceed 125 psi and water temperature must not exceed 150°F (66°C).**

### **OUTLET CONNECTION:**

Connect the discharge hose to the brass outlet garden hose fitting and squeeze the hose clamp around the hose. Locate the position for the mounting screw, and mount the hose clamp to the wall using the remaining screw and anchor. Spray guns, spray nozzles or foaming wands are used on the hose outlet. We recommend spray nozzles of 6 GPM or higher (at 40 psi). When a spray gun or nozzle is used, hose lengths must not exceed those shown in Table 1.

<b>Hose I.D.</b>	3/8"	1/2"	5/8" (or larger)
<b>Max Length</b>	15 ft.	50 ft.	100 ft.

### **CHEMICAL SUPPLY:**

**WARNING: Use care when handling hazardous chemicals.**

Place the chemical container(s) in a convenient location not more than six feet below the Spray & Foam Dispenser (greater distances will reduce injection capabilities). The top of the chemical product container should never be higher than the Spray & Foam Dispenser. Cut vinyl tubes to any convenient length that will allow the tubes to reach the bottom of the container(s). Remove the screw (22) and knob (21), raise the hinged cover, and push the other tubing ends over the chemical inlet barbs located on the sides of the injector. Place the tubing ends with the foot valves into the chemical containers.

### 3. Chemical Induction

The unit comes prepped with a burgundy ultra lean tip for the sanitizer and a pink tip for the detergent. The chemical induction is controlled by metering tips screwed into the hose barb(s) located on the sides of assembly. The feed rates can be changed by using different sizes of metering tips. To select the proper size of metering tip for the desired dilution ratio, refer to Table 2 below.

**TABLE 2  
METERING TIP SELECTION CHART  
FLUID DILUTION RATIOS WITH METERING TIP KIT (100-15K)**

Metering Tip Color	Injection Rates for Viscosities Shown								
	1 cps			75 cps			200 cps		
	Oz/Gal	mL/L	Ratio	Oz/Gal	mL/L	Ratio	Oz/Gal	mL/L	Ratio
Tan	0.40	3.11	320-1	0.25	1.95	512-1	0.20	1.56	640-1
Orange	0.50	3.89	256-1	0.35	2.72	366-1	0.25	1.95	512-1
Turquoise	0.70	5.45	183-1	0.50	3.89	256-1	0.35	2.72	366-1
Pink	0.95	7.39	135-1	0.65	5.06	197-1	0.45	3.50	284-1
Clear	1.30	10.12	98-1	0.80	6.23	160-1	0.55	4.28	233-1
Brown	1.50	11.68	85-1	0.90	7.01	142-1	0.60	4.67	213-1
Red	1.90	14.79	67-1	1.00	7.78	128-1	0.70	5.45	183-1
White	2.20	17.12	58-1	1.30	10.12	98-1	0.80	6.23	160-1
Green	2.60	20.24	49-1	1.50	11.68	85-1	0.90	7.01	142-1
Blue	3.20	24.91	40-1	1.75	13.62	73-1	1.00	7.78	128-1
Yellow	4.85	37.75	26-1	2.25	17.51	57-1	1.10	8.56	116-1
Black	6.50	50.60	20-1	2.40	18.68	53-1	1.15	8.95	111-1
Purple	9.20	71.61	14-1	2.70	21.02	47-1	1.20	9.34	107-1
Gray	10.40	80.95	12-1	2.85	22.18	45-1	1.25	9.73	102-1
No Tip	16.00	124.54	8-1	3.50	27.24	37-1	1.55	12.07	83-1

All injection ratios are based on 40 PSI inlet water pressure and a water flow rate of 2.7 GPM.

### 4. Operation

The Spray & Foam Dispenser permits the operator to select either chemical or clear water rinse by turning the selector knob. When using a spray gun or foaming wand, make sure that the gun on the end of the hose is in the full open position when inducing chemical. REMEMBER TO ALWAYS TURN WATER OFF WHEN DISPENSER IS NOT IN USE.

## 5. Troubleshooting

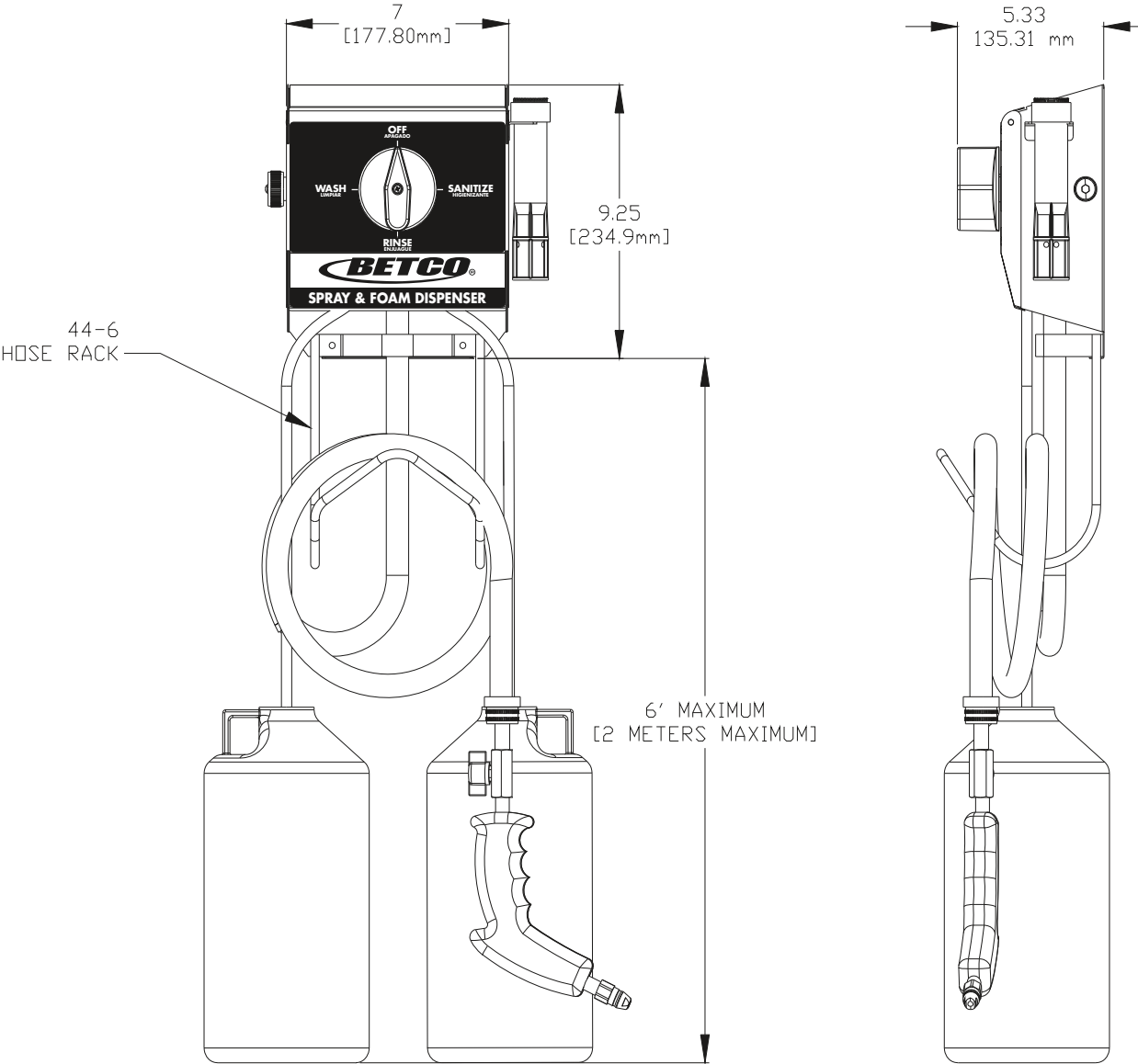
**CAUTION:** Turn off water supply before servicing.

<b>Symptom</b>	<b>Probable Cause</b>	<b>Remedy</b>
Unit fails to draw chemical	<ol style="list-style-type: none"><li>1. The discharge hose is too long or is the inside diameter too small</li><li>2. Gun or nozzle is sized incorrectly</li><li>3. Metering tip is blocked</li><li>4. Chemical hoses are kinked</li><li>5. Spray gun is not fully open</li><li>6. Injector is clogged</li><li>7. Foot valve is clogged</li><li>8. Spray nozzle is clogged</li><li>9. Chemical seals are damaged</li><li>10. Chemical check valve seals are damaged</li></ol>	<ol style="list-style-type: none"><li>1. See Table 1 for proper sizing.</li><li>2. Refer to section 2 B and resize gun or nozzle accordingly</li><li>3. Remove tip and clean it</li><li>4. Replace hose</li><li>5. Adjust gun to fully open</li><li>6. Replace the injector</li><li>7. Remove foot valve and clean it.</li><li>8. Remove nozzle and clean it</li><li>9. Replace chemical seals (See steps on replacing chemical seals).</li><li>10. Replace check valve seals</li></ol>

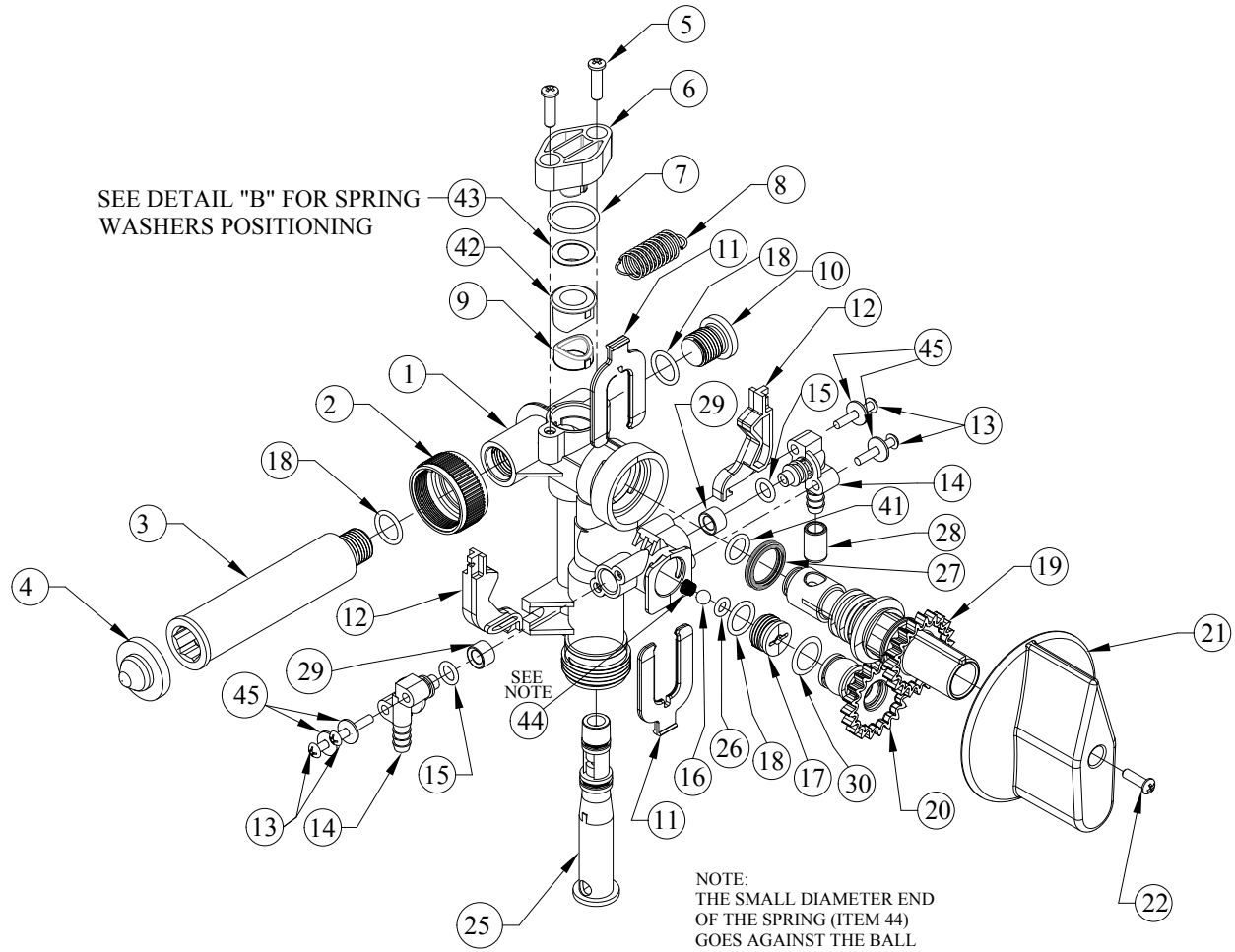
# 6. Dimensions

**OVERALL DIMENSIONS:**

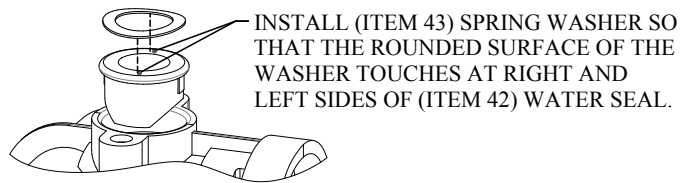
Weight: 2.5 lb. (1.14 kg.):



# 7. Spray & Foam Dispenser Diagram



COVER AND CASE ASSEMBLY  
NOT SHOWN



DETAIL B



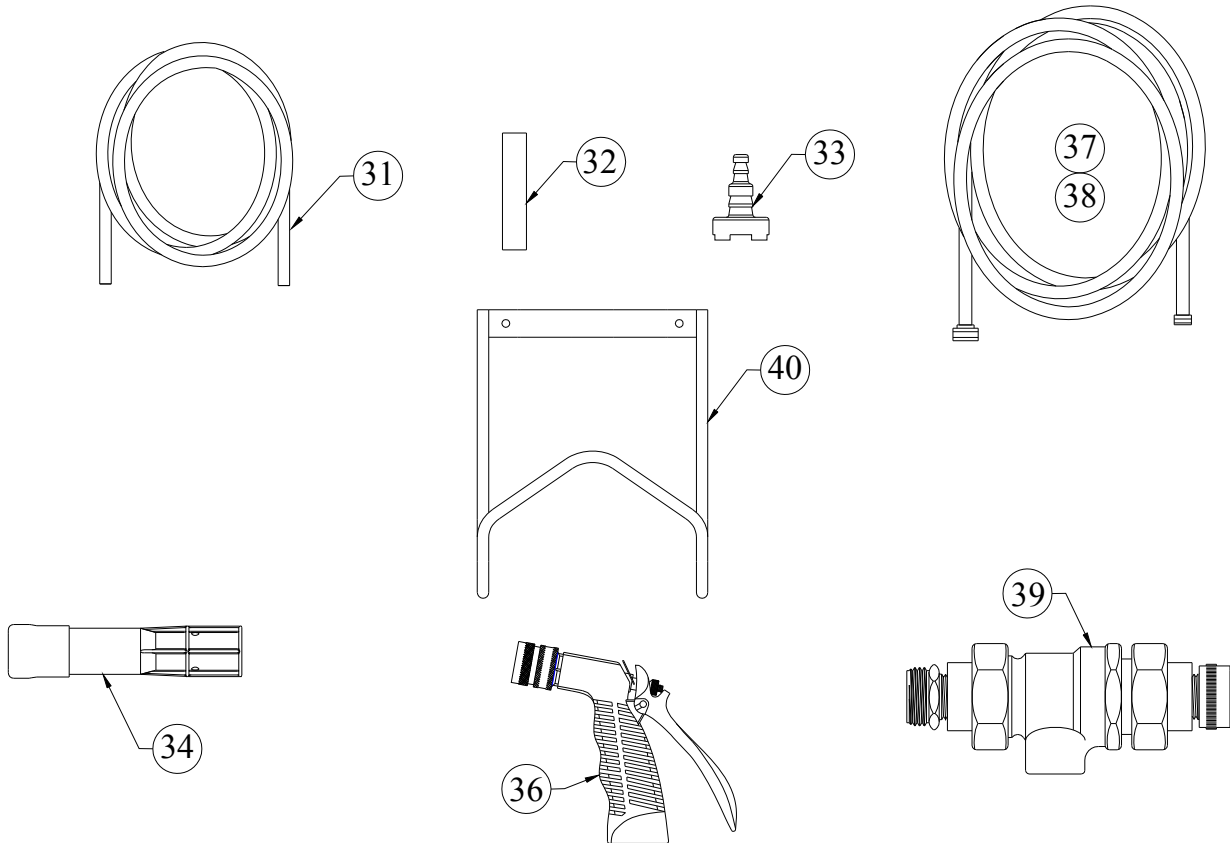


## 7. Spray & Foam Dispenser Parts Listing

Item#	Part #	Description	Qty.
1	63.1	Vavle Body	1
2	65.10	Coupling	1
3	66.93	Inlet	1
4	100.38	Strainer Washer	1
5	44.116.5	#8 HI-LO Screw x5/8" lg.	2
6	63.21	Water Seal Retainer	1
7	63.22	O-Ring	1
8	63.9	Extension Spring	1
9	66.93.8	Water Seal	1
10	63.11	Plug	1
11	63.12	Gear Retainer	2
12	63.13	Detent	2
13	58.102	#6 HI-LO Screw x 3/4" lg.	4
14	63.14	Elbow	2
15	63.4	O-Ring	2
16	24.24P7	Ball (.2188 dia)	1

Item#	Part #	Description	Qty.
17	63.15	Check Valve Body	1
18	63.7	O-Ring	3
19	63.23	Drive Gear	1
20	63.17	Driven Gear	1
21	63.18	Knob	1
22	58.60	#6 HI-LO Screw x 1/2" lg.	1
25	20.1M.11RF	Injector 2.7 GPM (Color Gray)	1
26	63.3	O-Ring	1
27	63.26	Quad Ring	1
29	66.93.7	Chemical Seal	2
30	57.10.51A	O-Ring	1
41	25.29VA	O-Ring	1
42	63.24	Water Seal	1
43	63.25	Spring Washer	1
44	63.1	Spring Washer	1
45	29.17.3	Washer	4

## 8. Spray & Foam Dispenser Diagram and Listing



Item#	Part #	Description
31	100.12.33	Vinyl Tubing 7/32" I.D. x 8' long
32	61.107.2	Ceramic Weight 1/4" I.D.
33	100.16V	Foot Valve Assembly
34	292GQD	Foam Wand (for trigger handle gun)
36	28.1QD	Spray gun w/ quick disconnect
37	44.3.6	Hose Assembly Black 1/2" I.D. x 6' long

Item#	Part #	Description
38	44.3RG.50	Hose Assembly Red 1/2" I.D. x 50' long
39	44.89.112	Backflow assembly with garden hose fitting
40	44.6	Hose Rack
41	66.231	Hose clamp kit (not shown)
42	66.54	Screw and anchor kit (not shown)
43	L1734	Carton Label (Not shown)

### **RETURN POLICY**

No merchandise may be returned for credit without BETCO Corporation's written permission. Return Merchandise Authorization (RMA) number required in advance of return.

### **WARRANTY**

BETCO products are warranted against defective material and workmanship under normal use and service for one year from the date of manufacture. This limited warranty does not apply to products that have a normal life shorter than one year or failure and damage caused by chemicals, corrosion, improper voltage supply, physical abuse or misapplication. Rubber and synthetic parts such as "O"-rings, diaphragms, squeeze-tubes and gaskets are considered expendable and are not covered under warranty. This warranty is extended only to the original buyer of BETCO products. If products are altered or repaired without prior approval of BETCO, this warranty will be void.

Defective units or parts should be returned to the factory with transportation prepaid. If inspection shows them to be defective, they will be repaired or replaced without charge. F.O.B. factory BETCO assumes no liability for damages. Return merchandise authorization number to return units for repair or replacement must be granted in advance of return.



Cleaning Innovations That Matter.

888-GO BETCO | [betco.com](http://betco.com)

©2016 Betco Corporation  
All Rights Reserved.  
400 Van Camp Road  
Bowling Green, Ohio 43402  
Item #92370-92



06/2016