

**BETCO**®

# GENESYS™

Walk-Behind Scrubber Series



YOUR TOUGHEST JOBS.  
**DONE.**

# GENESYS™

## THE NEXT GENERATION OF CLEANING SYSTEMS

### There is a reason why it is called GeneSys™.

This new Walk-Behind Scrubber Series — designed, developed, and assembled at our new headquarters in Bowling Green, Ohio — is the next generation of auto scrubbers. Co-developed with industry experts, each detail has been scrutinized for an unparalleled customer experience.

Power to spare allows you to perform cleaning or project work faster and with less effort. Plus, smart technologies make your operation more efficient at a lower cost.

### Clean faster with less effort and cost!

You are the one who picks the V8 engine because you know that when you need the extra power, it has got to be there. That is why the GeneSys™ boasts the best performance specifications in its class. You won't be left hanging.

**BEST**  
Performance  
Specifications  
in its class



### GeneSys™ Mid-Size

- 33% More Horsepower\*
- 36% More RPMs\*
- 50% More Down Pressure\*\*



### GeneSys™ 20

- 25% More Horsepower\*
- 50% More Down Pressure\*

## SMART, PROBLEM SOLVING TECHNOLOGIES



### SoliChem™ Technology ↑

This is the first-ever on-board chemical dispensing system that utilizes chemical solids, resulting in:

- Up to 80% lower daily chemical costs
- Alleviation of mixing hassles and waste
- Increased sustainability with less water and packaging

### SoliChem Chemicals

DAILY: pH7 Ultra  
DEGREASER: Probiotic Solutions Grease Solv

### SoliChem included standard on all GeneSys Mid-Size Scrubbers!



Patent Pending SoliChem Misting Chamber

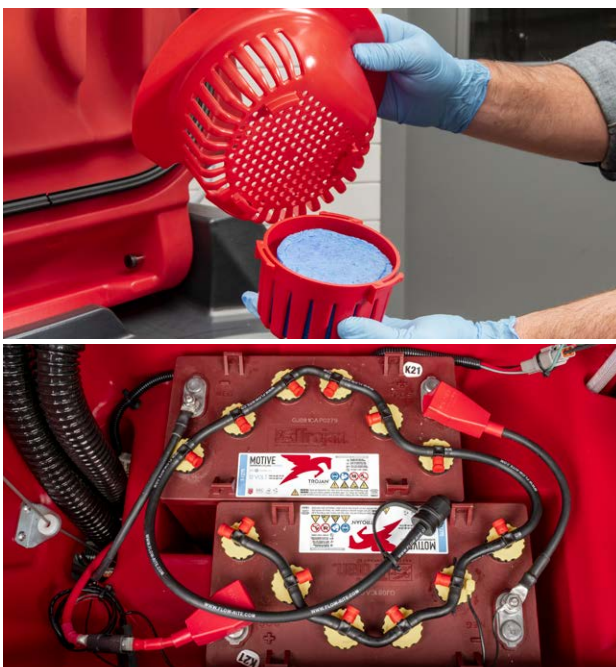


### Fortify™ Asset Protection and Management Suite

Fortify™ is a suite of features and technologies that reduces the cost of ownership while extending machine life.

Make the smart decision and buy the Betco® GeneSys Scrubber to help manage your long-term operations.

- Wet Battery Protection System
- Tank Defoaming System ↑
- Armor™ Telemetry (Armor™ is a trademark of USA Clean)
- Programmable Timer Lock-out
- Foam De-Misting Chamber
- Scrub Deck Service Panel
- 10 / 3 / 3 Warranty



## Airoflex®

### Airoflex® is the Most Advanced Squeegee on the Market

The GeneSys scrubbers are also first to include as a standard feature the most advanced squeegee on the market, Airoflex®. This specialized blade increases vacuum performance by up to 40%, leaving your floors drier and safer than the competition.

And if you have grouted tile, textured or porous floors, these blades are a must have as they maintain the vacuum force better than traditional squeegees.

### Best Drying Performance!



Airoflex® is a registered trademark of the Midwest Rubber Company

\*Versus leading disk scrubber competitor

\*\*Versus leading disk and orbital scrubber competitors

↑ Patent Pending

# GeneSys™ Walk-Behind Scrubbers - Specifications

SPECIFICATIONS	GeneSys™ 20-inch Scrubbers			GeneSys™ Mid-Size Scrubbers				
	GeneSys™ 20D	GeneSys™ 20DT	GeneSys™ 20ORB	GeneSys™ 26D	GeneSys™ 28D	GeneSys™ 32D	GeneSys™ 28ORB	
<b>Productivity (ft<sup>2</sup> / hr)</b>	Up to 22,500	Up to 22,500	Up to 22,500	Up to 29,250	Up to 31,500	Up to 36,000	Up to 31,500	
<b>Scrub Deck</b>	20 - in Disk	20 - in Disk	20 - in x 14-in Orbital	26 - in Disk	28 - in Disk	32 - in Disk	28 - in x 14 - in Orbital	
<b>Pad / Brush Dimensions</b>	(1) 20 in	(1) 20 in	(1) 14 in x 20 in Rectangle	(2) 13 in	(2) 14 in	(2) 16 in	(1) 14 in x 28 in Rectangle	
<b>Solution Tank</b>	13 - gal	13 - gal	13 - gal	25 - gal	25 - gal	25 - gal	25 - gal	
<b>Recovery Tank</b>	15 - gal	15 - gal	15 - gal	28 - gal	28 - gal	28 - gal	28 - gal	
<b>Drive System</b>	Pad Assist	Transaxle	Transaxle	Transaxle	Transaxle	Transaxle	Transaxle	
<b>Brush Motor(s)</b>	(1) 1.0 HP	(1) 1.0 HP	(1) 0.75 HP	(2) 1.0 HP	(2) 1.0 HP	(2) 1.0 HP	(1) 0.75 HP	
<b>Pad Speed</b>	230 RPM	230 RPM	2200 RPM	300 RPM	300 RPM	300 RPM	2200 RPM	
<b>Down Pressures</b>	60 lb & 100 lb	60, 80 & 100 lb	60, 85 & 110 lb	60, 120 & 180 lb	60, 120 & 185 lb	60, 120 & 185 lb	60, 120 & 185 lb	
<b>Battery Options</b>	130 AH Wet 110 AH AGM	130 & 150 AH Wet 110 AH AGM	130 & 150 AH Wet 110 AH AGM	260 AH Wet 220 AH AGM	260 AH Wet 220 AH AGM	260 AH Wet 220 AH AGM	260 AH Wet 220 AH AGM	
<b>Run Time</b>	Up to 3 hr	Up to 3 hr	Up to 3.5 hr	Up to 4.5 hr	Up to 4.5 hr	Up to 4.0 hr	Up to 5.5 hr	
<b>Solution Flow</b>	0 - 0.5 gpm	0 - 0.5 gpm	0 - 0.5 gpm	0 - 0.75 gpm	0 - 0.75 gpm	0 - 0.75 gpm	0 - 0.75 gpm	
<b>Vac Motor / Filter</b>	0.62 HP / HEPA	0.62 HP / HEPA	0.62 HP / HEPA	0.72 HP / HEPA	0.72 HP / HEPA	0.72 HP / HEPA	0.72 HP / HEPA	
<b>Sound Levels</b>	≤65 dBa	≤65 dBa	≤65 dBa	≤65 dBa	≤65 dBa	≤65 dBa	≤65 dBa	
<b>Machine Weight (Largest Battery)</b>	375 lb	425 lb	425 lb	625 lb	630 lb	640 lb	630 lb	
<b>Machine Dimensions</b>	51 in x 21 in x 42 in	51 in x 21 in x 42 in	46 in x 21 in x 42 in	55 in x 28 in x 44 in	56 in x 30 in x 44 in	59 in x 34 in x 44 in	54 in x 29 in x 44 in	
<b>Squeegee Width</b>	30 in	30 in	30 in	35 in	40 in	45 in	40 in	
<b>Warranty*</b>	10 - Years Rotomold 3 - Years Parts/Labor 180 - Days Travel 1 - Year Pro-rated Batteries	10 - Years Rotomold 3 - Years Parts/Labor 180 - Days Travel 1 - Year Pro-rated Batteries	10 - Years Rotomold 3 - Years Parts/Labor 180 - Days Travel 1 - Year Pro-rated Batteries	10 - Years Rotomold 3 - Years Parts/Labor 180 - Days Travel 1 - Year Pro-rated Batteries	10 - Years Rotomold 3 - Years Parts/Labor 180 - Days Travel 1 - Year Pro-rated Batteries	10 - Years Rotomold 3 - Years Parts/Labor 180 - Days Travel 1 - Year Pro-rated Batteries	10 - Years Rotomold 3 - Years Parts/Labor 180 - Days Travel 1 - Year Pro-rated Batteries	10 - Years Rotomold 3 - Years Parts/Labor 180 - Days Travel 1 - Year Pro-rated Batteries

\*See full warranty for details

## Key Options & Accessories

**Fortify™ Wet Battery Protection System**

**Fortify™ Programmable Timer Lock-out**

**Fortify™ Armor™ Telemetry & Reporting**

**Fortify™ Foam Control**

**SoliChem™ Chemicals:**

Daily: pH7 Ultra

Degreaser: Probiotic Solutions Grease Solv

**Brushes:** General Purpose



888-GO BETCO | betco.com

©2023 Betco Corporation  
All Rights Reserved.  
400 Van Camp Road  
Bowling Green, Ohio 43402  
Item #92488-92

